

**BTN2A1 Antibody (monoclonal) (M01)**

Mouse monoclonal antibody raised against a full length recombinant BTN2A1.

Catalog # AT1319a

**Specification**

---

**BTN2A1 Antibody (monoclonal) (M01) - Product Information**

Application	E
Primary Accession	<a href="#">Q7KYR7</a>
Other Accession	<a href="#">BC016661</a>
Reactivity	Human
Host	mouse
Clonality	Monoclonal
Isotype	IgG2a Kappa
Calculated MW	59633

**BTN2A1 Antibody (monoclonal) (M01) - Additional Information**

**Gene ID** 11120

**Other Names**

Butyrophilin subfamily 2 member A1, BTN2A1, BT21, BTF1

**Target/Specificity**

BTN2A1 (AAH16661, 1 a.a. ~ 334 a.a) full-length recombinant protein with GST tag. MW of the GST tag alone is 26 KDa.

**Dilution**

E~~N/A

**Format**

Clear, colorless solution in phosphate buffered saline, pH 7.2 .

**Storage**

Store at -20°C or lower. Aliquot to avoid repeated freezing and thawing.

**Precautions**

BTN2A1 Antibody (monoclonal) (M01) is for research use only and not for use in diagnostic or therapeutic procedures.

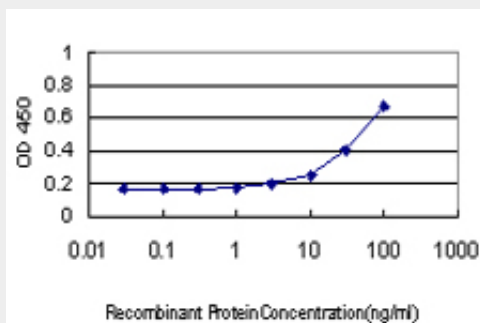
**BTN2A1 Antibody (monoclonal) (M01) - Protocols**

Provided below are standard protocols that you may find useful for product applications.

- [Western Blot](#)
- [Blocking Peptides](#)
- [Dot Blot](#)
- [Immunohistochemistry](#)

- [Immunofluorescence](#)
- [Immunoprecipitation](#)
- [Flow Cytometry](#)
- [Cell Culture](#)

#### **BTN2A1 Antibody (monoclonal) (M01) - Images**



Detection limit for recombinant GST tagged BTN2A1 is approximately 1ng/ml as a capture antibody.

#### **BTN2A1 Antibody (monoclonal) (M01) - Background**

This gene is a member of the BTN2 subfamily of genes, which encode proteins belonging to the butyrophilin protein family. The gene is located in a cluster on chromosome 6, consisting of seven genes belonging to the expanding B7/butyrophilin-like group, a subset of the immunoglobulin gene superfamily. The encoded protein is an integral plasma membrane B box protein involved in lipid, fatty-acid and sterol metabolism.

#### **BTN2A1 Antibody (monoclonal) (M01) - References**

Variants in TF and HFE explain approximately 40% of genetic variation in serum-transferrin levels. Benyamin B, et al. Am J Hum Genet, 2009 Jan. PMID 19084217. The B7 homolog butyrophilin BTN2A1 is a novel ligand for DC-SIGN. Malcherek G, et al. J Immunol, 2007 Sep 15. PMID 17785817. Complete sequencing and characterization of 21,243 full-length human cDNAs. Ota T, et al. Nat Genet, 2004 Jan. PMID 14702039. The DNA sequence and analysis of human chromosome 6. Mungall AJ, et al. Nature, 2003 Oct 23. PMID 14574404. Generation and initial analysis of more than 15,000 full-length human and mouse cDNA sequences. Strausberg RL, et al. Proc Natl Acad Sci U S A, 2002 Dec 24. PMID 12477932.